

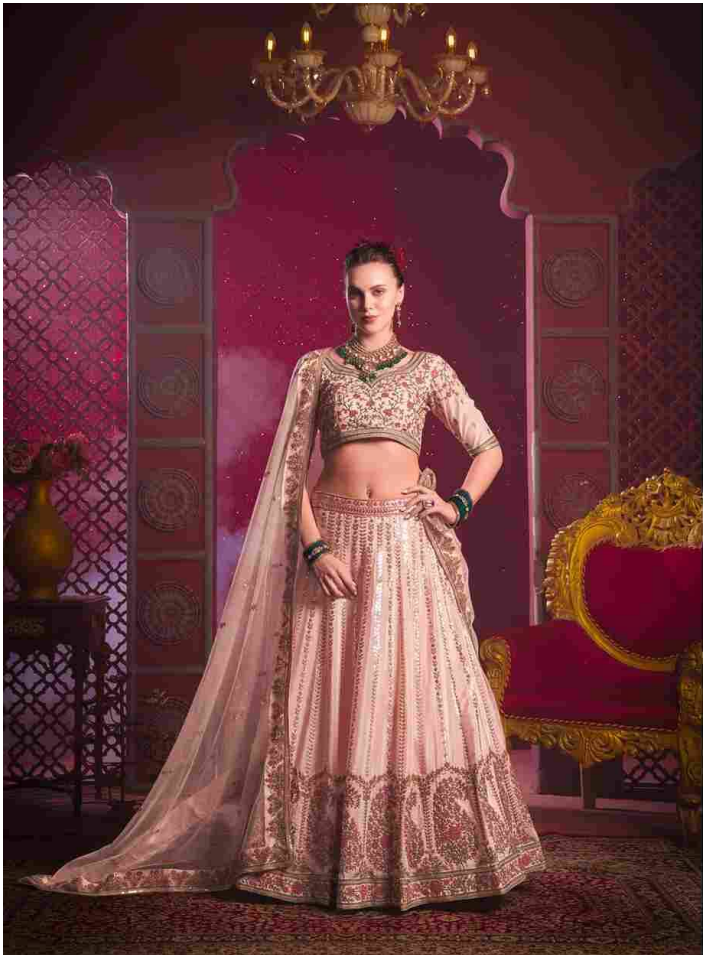
Anantesh[®]
Lifestyle



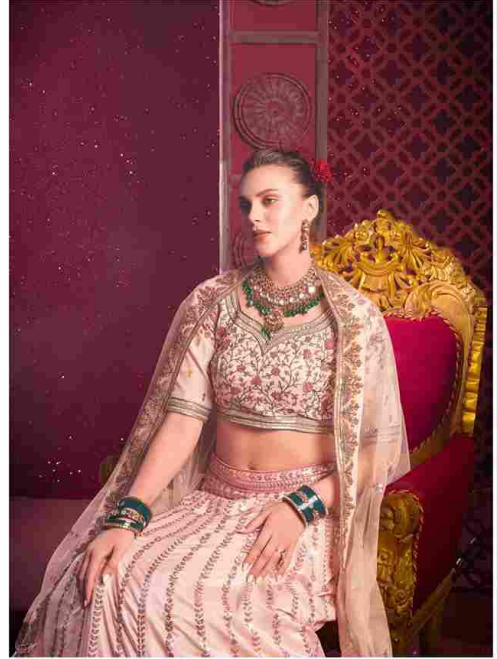


THE LEHENGA SKIRT BEING THE CENTERPIECE PROVIDED A CANVAS FOR THE ARTISANS TO TRY OUT THEIR SKILLS. AND WITH TIME, THE CURRENT DESIGNERS GIVE IT A CONTEMPORARY TWIST, KEEPING THE MAIN SILHOUETTE SIMILAR TO ITS ANCIENT TWINS

11021



अनंतेश®
Lifestyle



AH ISN'T IT EVERY GIRL'S DREAM TO WEAR A DESIGNER LEHENGA ON HER WEDDING, CLICKING PICTURES WITH HER SIGNIFICANT OTHER UNDER A JHAROKHA IN A FORT AND WHAT NOT?

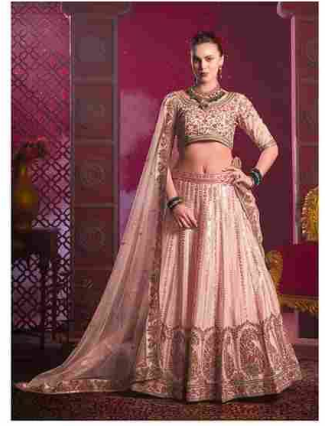
11022



Bridemaid
VOL-04
Anantesh®
Lifestyle



11021



11022

CODE	MAIN COLOUR	LEHENGA FABRIC	BLOUSE FABRIC	DUPATTA FABRIC (DOUBLE DUPATTA)	SIZE SEMI STITCHED	READYMADE	WEIGHT	WORK DETAILS	PRICE (EXCLUDING GST 12%)
11021	CREAMIEE	VENILA SHINE SILK	VENILA SHINE SILK	PREMIUM NET	Size upto 42 bust and waist	XS,S,M,L,XL	3kg.	PREMIUM SEQUANCE AND EMBROIDERY THREAD WORK	5495/-
11022	PEACH	VENILA SHINE SILK	VENILA SHINE SILK	PREMIUM NET	Size upto 42 bust and waist	XS,S,M,L,XL	3kg.	PREMIUM SEQUANCE AND EMBROIDERY THREAD WORK	5495/-

TOTAL AMOUNT 10990/-
12% GST TEX EXTRA

AVRG AMOUNT 5495/-

PLEASE NOTE :-THERE IS TWO OPTION SEMI STITCH AND READYMADE PRODUCT . READY MADE WILL TAKE 2 DAYS AFTER ORDER