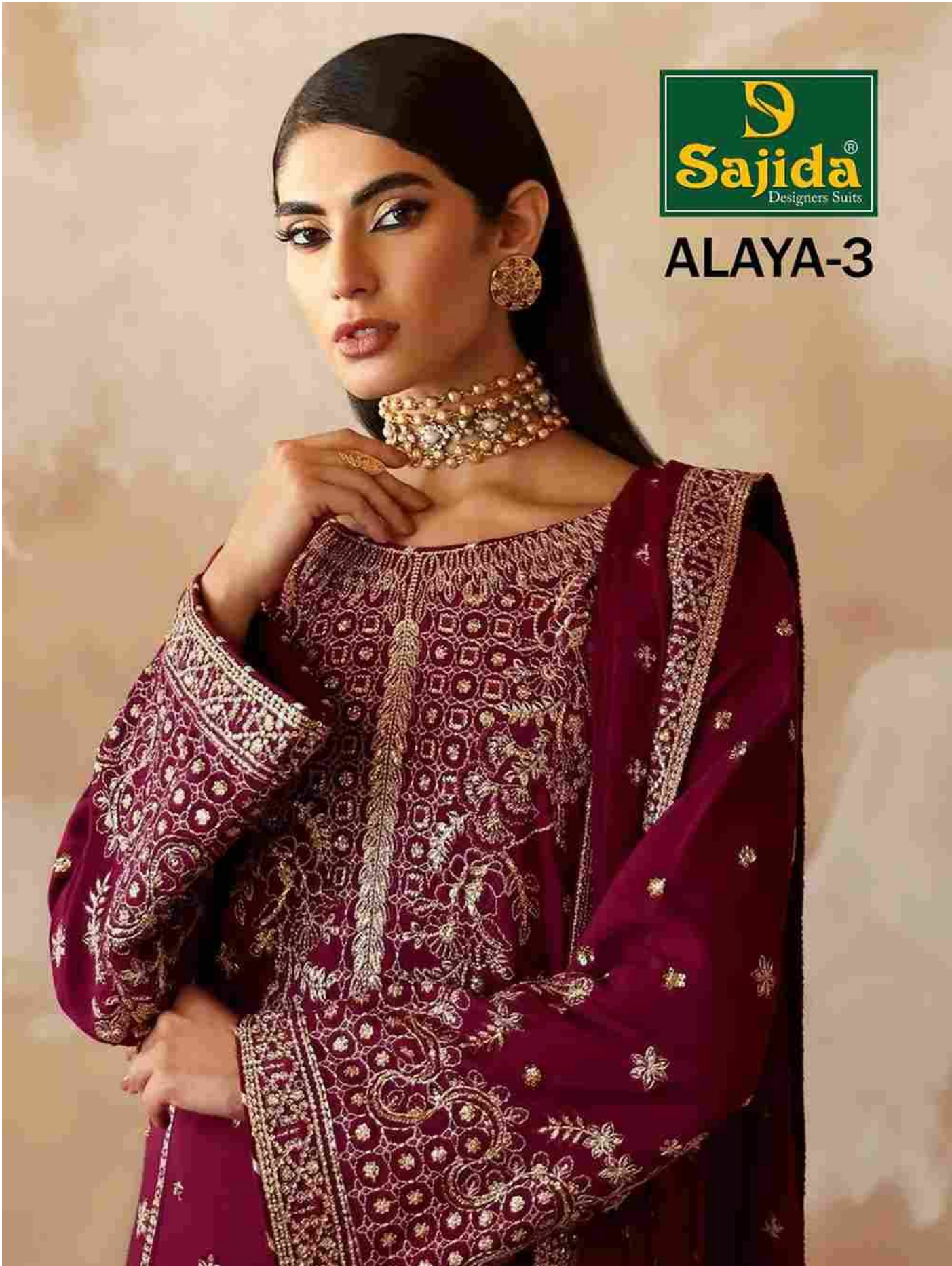




**ALAYA-3**





**ALAYA-3**



**D.No.1027**

**TOP** Heavy Fox Georgette embroidery with Khatli work (cut 2.50)

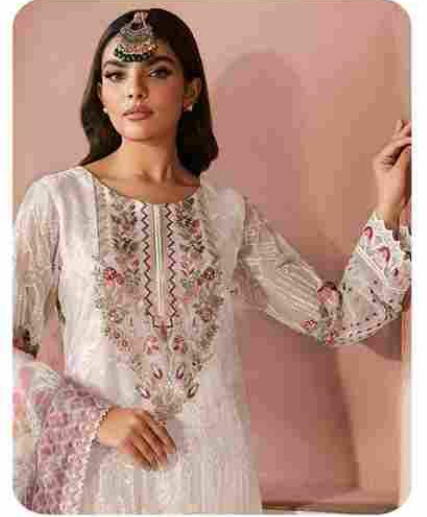
**BOTTOM-INNER** Dull Santoon (cut 4.25)

**DUPATTA** Heavy Fox Georgette embroidery work (cut 2.30)

**CARE INSTRUCTIONS**

- ☉ Dry clean only
- ⊗ Do not use any bleach or stain removing chemical
- ☰ Iron the fabric at moderate temperature
- ☒ Do not dry fabric in direct sunlight





**ALAYA-3**

**D.No.1028**

**TOP** Hevay Fox Georgette embroidery with Khatli work (cut 2.50)

**BOTTOM-INNER** Dull Santoon (cut 4.25)

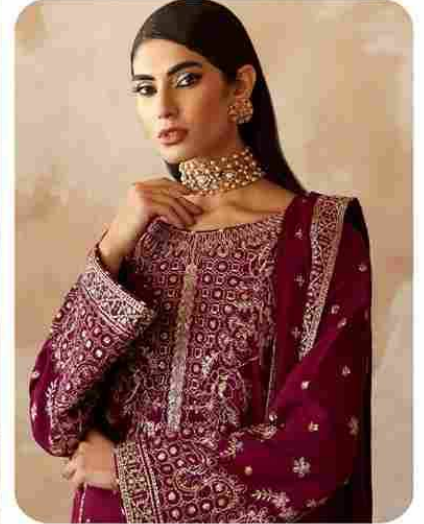
**DUPATTA** Hevay Fox Georgette with digital print (cut 2.30)

**CARE INSTRUCTIONS**

- ☉ Dry clean only
- ⊗ Do not use any bleach or stain removing chemical
- ☰ Iron the fabric at moderate temperature
- ☒ Do not dry fabric in direct sunlight



**ALAYA-3**



**D.No.1029**

**TOP** Heavy Fox Georgette embroidery with Khatli work (cut 2.50)

**BOTTOM-INNER** Dull Santoon (cut 4.25)

**DUPATTA** Heavy Fox Georgette embroidery work (cut 2.30)

**CARE INSTRUCTIONS**

- ☉ Dry clean only
- ⊗ Do not use any bleach or stain removing chemical
- ☰ Iron the fabric at moderate temperature
- ☒ Do not dry fabric in direct sunlight





# ALAYA-3



D.No.1027



D.No.1028



D.No.1029