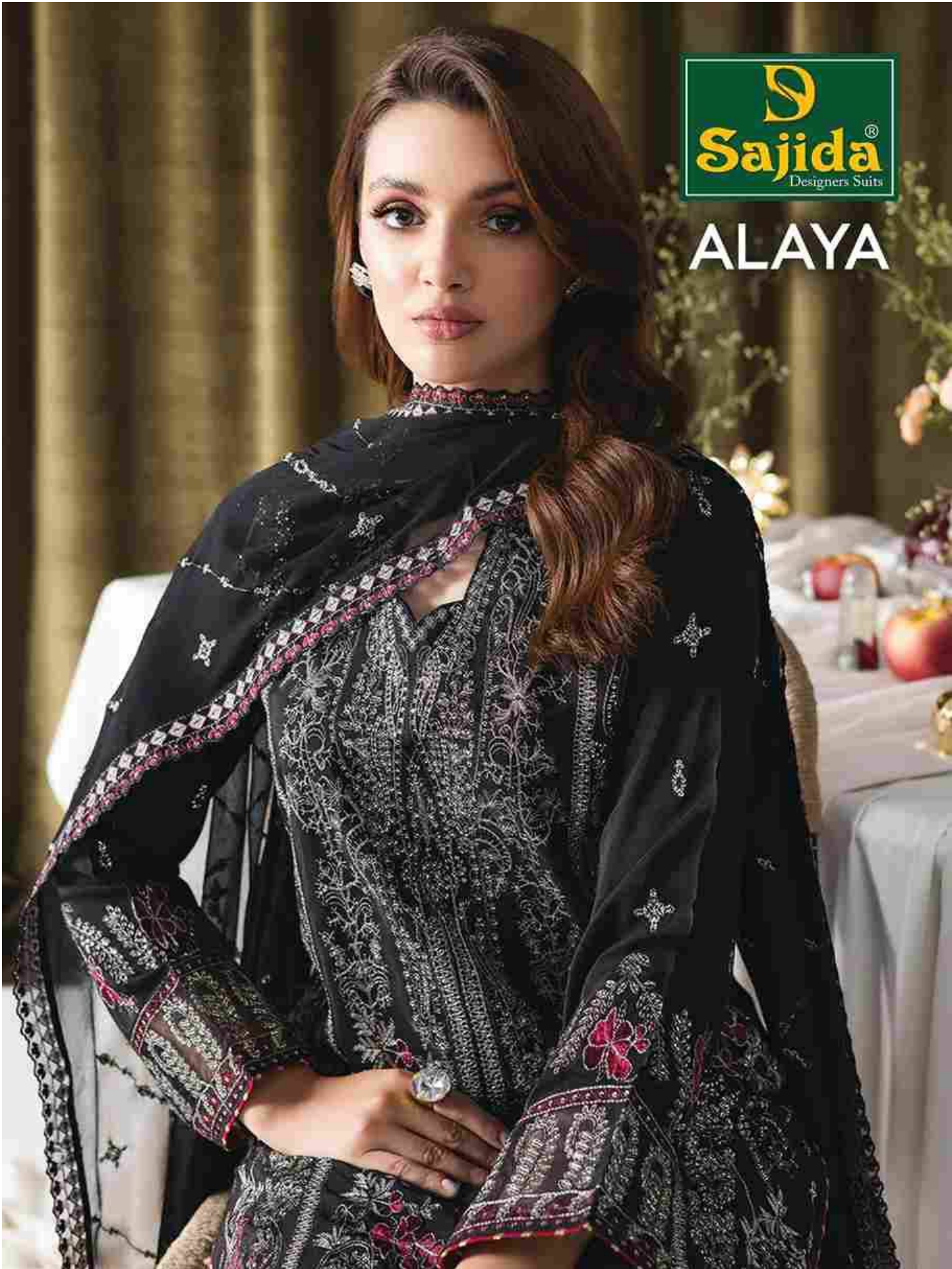


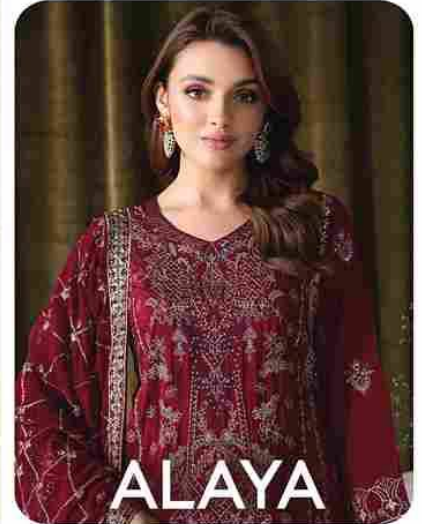


ALAYA





D.No: 1008



**TOP** Heavy Fox Georgette embroidery with Khatli work (cut 2.50)

**BOTTOM-INNER** Dull Santoon (cut 4.25)

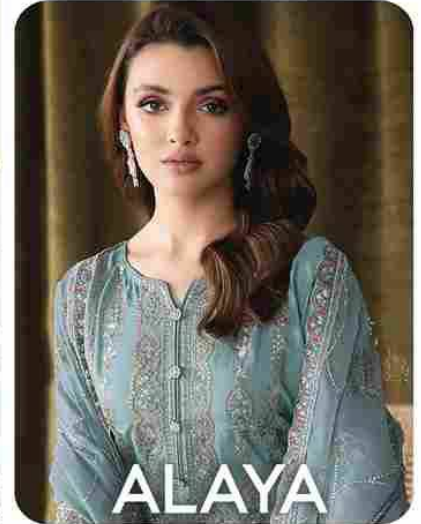
**DUPATTA** Heavy Fox Georgette embroidery work (cut 2.30)

**CARE INSTRUCTIONS**

- ☉ Dry clean only
- ⚠ Do not use any bleach or stain removing chemical
- ☐ Iron the fabric at moderate temperature
- ☒ Do not dry fabric in direct sunlight



D.No: 1009



**TOP** Heavy Fox Georgette embroidery with Khatli work (cut 2.50)

**BOTTOM-INNER** Dull Santoon (cut 4.25)

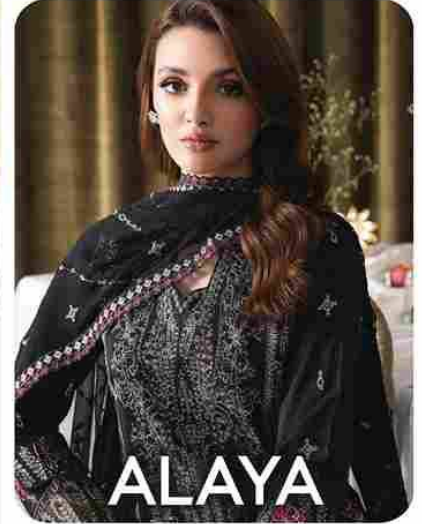
**DUPATTA** Heavy Fox Georgette embroidery work (cut 2.30)

**CARE INSTRUCTIONS**

- ☉ Dry clean only
- ⚠ Do not use any bleach or stain removing chemical
- ☎ Iron the fabric at moderate temperature
- ☒ Do not dry fabric in direct sunlight



D.No: 1010



**TOP** Heavy Fox Georgette embroidery with Khatli work (cut 2.50)

**BOTTOM-INNER** Dull Santoon (cut 4.25)

**DUPATTA** Heavy Fox Georgette embroidery work (cut 2.30)

**CARE INSTRUCTIONS**

- ☉ Dry clean only
- ⚠ Do not use any bleach or stain removing chemical
- ☐ Iron the fabric at moderate temperature
- ☒ Do not dry fabric in direct sunlight



# ALAYA

### CARE INSTRUCTIONS

- ☉ Dry clean only
- ⚠ Do not use any bleach or stain removing chemical
- ☐ Iron the fabric at moderate temperature
- ☒ Do not dry fabric in direct sunlight

### TOP

Heavy Fox Georgette embroidery with Khatli work (cut 2.50)

### BOTTOM-INNER

Dull Santoon (cut 4.25)

### DUPATTA

Heavy Fox Georgette embroidery work (cut 2.30)



**D.No: 1008**



**D.No: 1009**



**D.No: 1010**