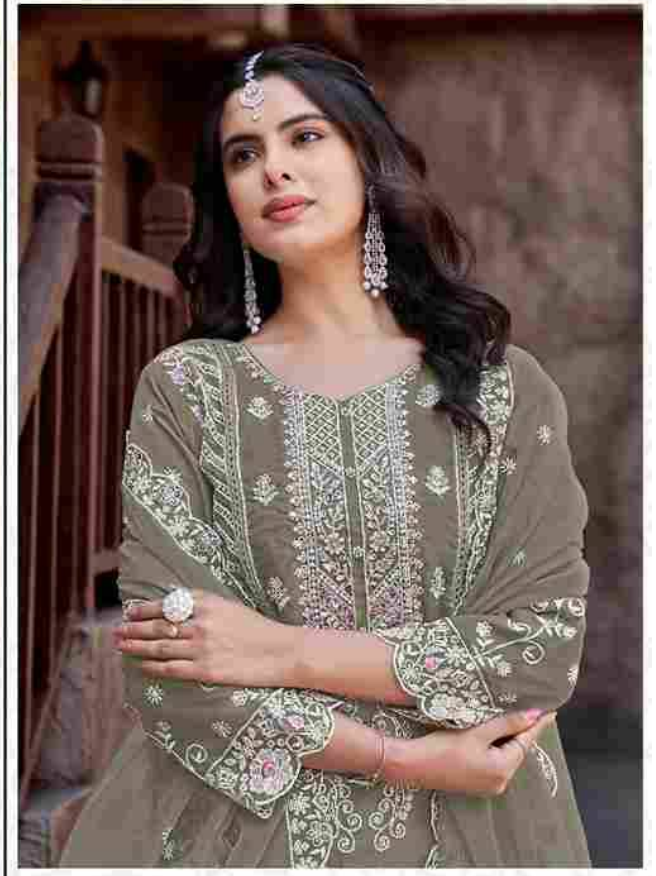




Motifz
FASHION FORWARD

D.no-839-F



**TOP - JORJET WITH EMBROIDERY
Khatli Wrok**

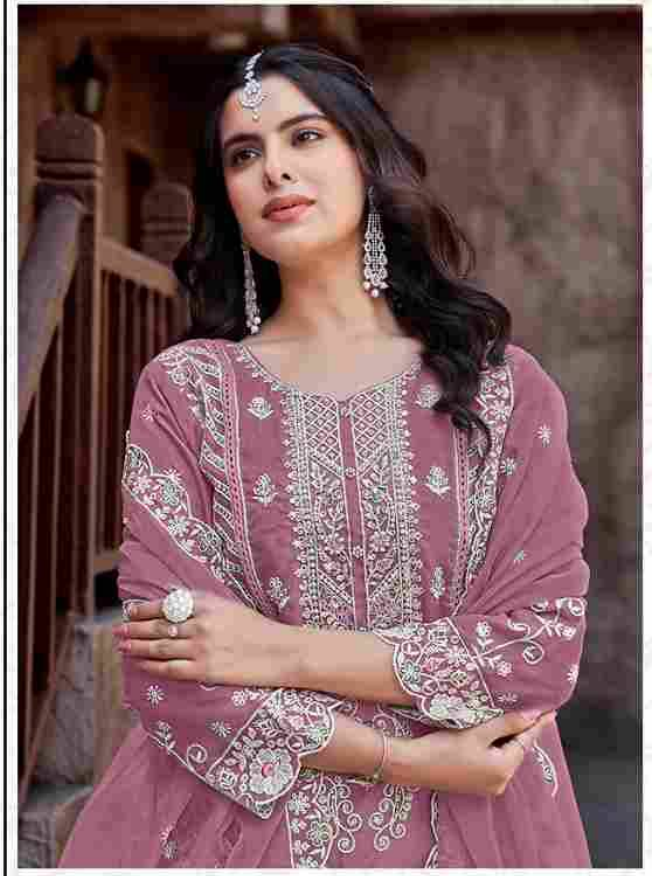
BOTTOM - DULL SANTOON PATCH WORK

DUPATTA - JORJET WITH EMBROIDERY



Motifz
FASHION FORWARD

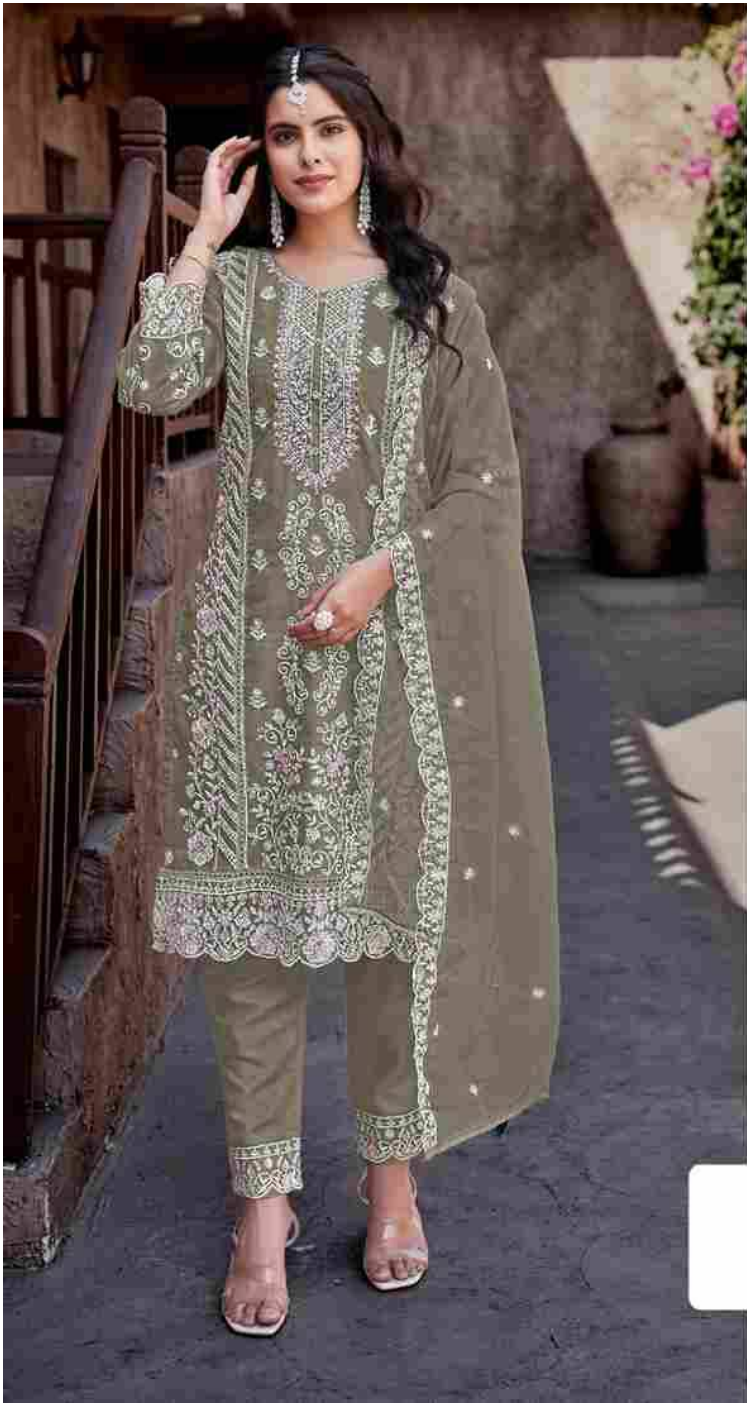
D.no-839-E



**TOP - JORJET WITH EMBROIDERY
Khatli Wrok**

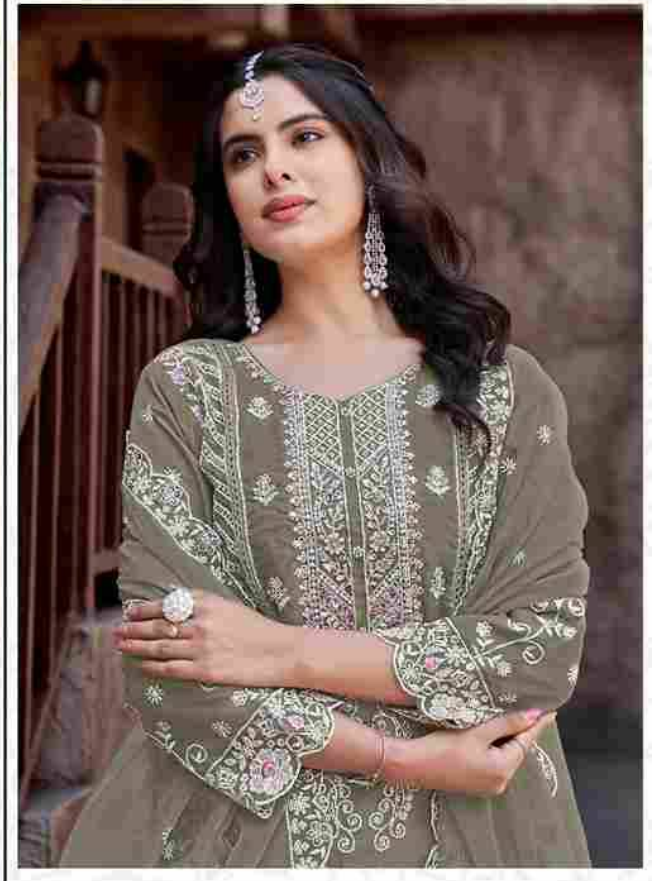
BOTTOM - DULL SANTOON PATCH WORK

DUPATTA - JORJET WITH EMBROIDERY



Motifz
FASHION FORWARD

D.no-839-F



**TOP - JORJET WITH EMBROIDERY
KHALTI WROK**

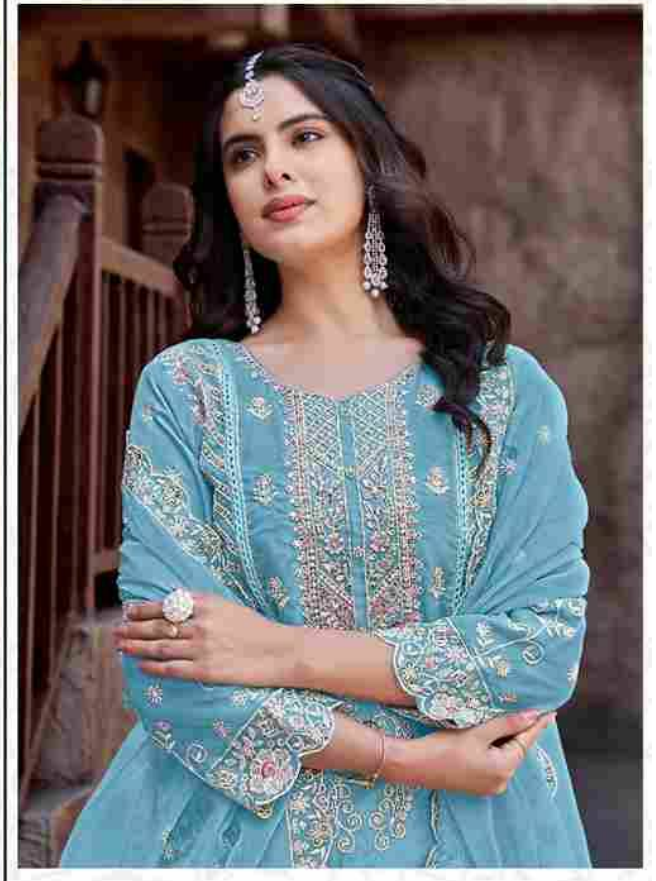
BOTTOM - DULL SANTOON PATCH WORK

DUPATTA - JORJET WITH EMBROIDERY



Motifz
FASHION FORWARD

D.no-839-G



**TOP - JORJET WITH EMBROIDERY
KHATLI WROK**

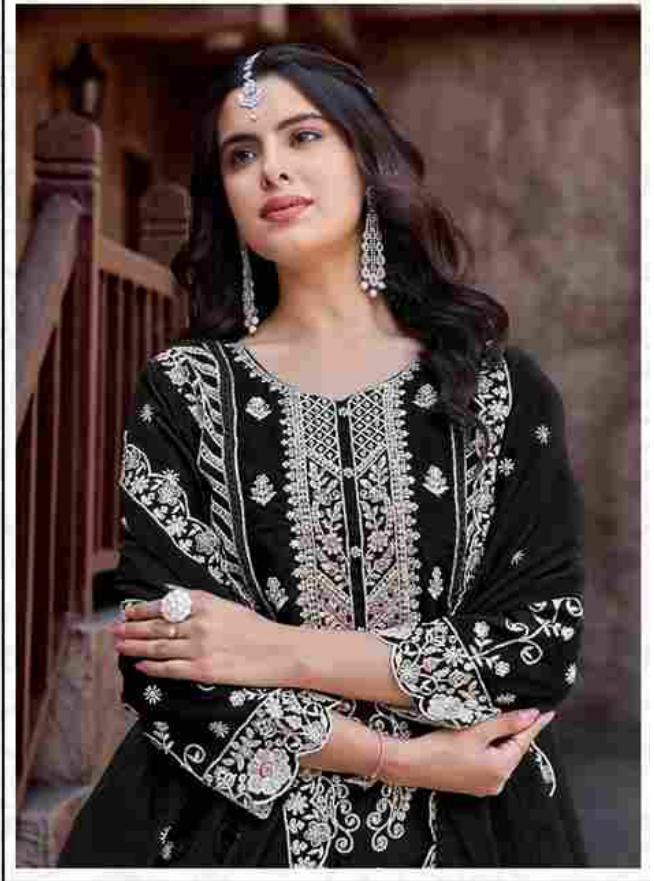
BOTTOM - DULL SANTOON PATCH WORK

DUPATTA - JORJET WITH EMBROIDERY



Motifz
FASHION FORWARD

D.no-839-B



**TOP - JORJET WITH EMBROIDERY
KHATLI WROK**

BOTTOM - DULL SANTOON PATCH WORK

DUPATTA - JORJET WITH EMBROIDERY



**TOP - JORJET WITH EMBROIDERY
KHATLI WROK**

BOTTOM - DULL SANTOON PATCH WORK

DUPATTA - JORJET WITH EMBROIDERY



D-839-E



D-839-F



D-839-G



D-839-H

