



Feva Vol-03





"When draped in a lehenga, every woman feels like a queen, radiating beauty, grace, and cultural pride."

₹ 1004 B





"Every pleat of a lehenga reflects craftsmanship, every embellishment whispers luxury, and every veil showcases breathtaking elegance."

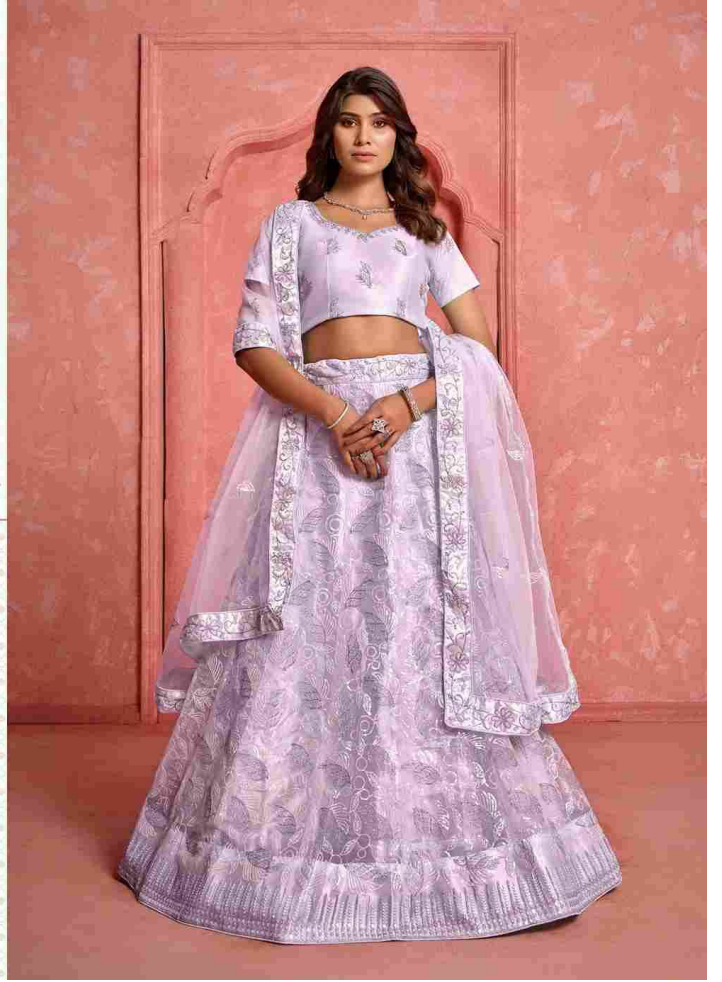
1004 C





"Twirl in a lehenga, feel like a queen, and let every step tell a story of royal beauty."

₹ 1004 D





"Each twirl in a lehenga tells a story of beauty, tradition, and the joy of being effortlessly stunning."

₹ 1004 E ⚡





₹ 1004 A ₹



₹ 1004 B ₹



₹ 1004 C ₹



₹ 1004 D ₹



₹ 1004 E ₹



Eeva Vol-03

Design NO. (SKU)	Main Color	Lehenga Fabric	Choli Fabric	Dupatta Fabric	Size (Semi-Stitched)	Lehenga & Choli	Dupatta Work	Choli Length MTR	Lehenga Length MTR	Dupatta Length MTR	Weight
1004-A	BABY BLUE	NET WITH SATIN INNER	NET WITH SATIN INNER	BUTTERFLY NET	UPTO 42 BUST AND WAIST	Thread With Sequince Embroidered Work	Thread With Sequince Embroidered Work	1 MTR	42 INCH	2.30 MTR	1.5 KG
1004-B	Peach	NET WITH SATIN INNER	NET WITH SATIN INNER	BUTTERFLY NET	UPTO 42 BUST AND WAIST	Thread With Sequince Embroidered Work	Thread With Sequince Embroidered Work	1 MTR	42 INCH	2.30 MTR	1.5 KG
1004-C	Light Grey	NET WITH SATIN INNER	NET WITH SATIN INNER	BUTTERFLY NET	UPTO 42 BUST AND WAIST	Thread With Sequince Embroidered Work	Thread With Sequince Embroidered Work	1 MTR	42 INCH	2.30 MTR	1.5 KG
1004-D	LAVENDER	NET WITH SATIN INNER	NET WITH SATIN INNER	BUTTERFLY NET	UPTO 42 BUST AND WAIST	Thread With Sequince Embroidered Work	Thread With Sequince Embroidered Work	1 MTR	42 INCH	2.30 MTR	1.5 KG
1004-E	LIPGLOSS PINK	NET WITH SATIN INNER	NET WITH SATIN INNER	BUTTERFLY NET	UPTO 42 BUST AND WAIST	Thread With Sequince Embroidered Work	Thread With Sequince Embroidered Work	1 MTR	42 INCH	2.30 MTR	1.5 KG