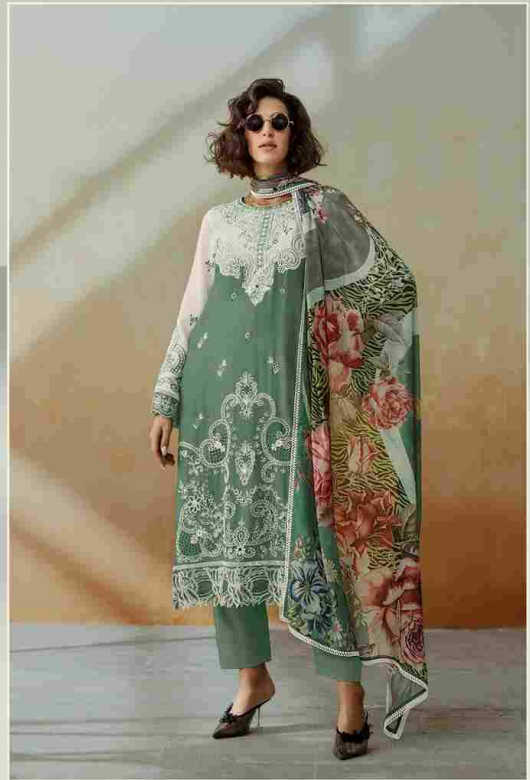


Heer

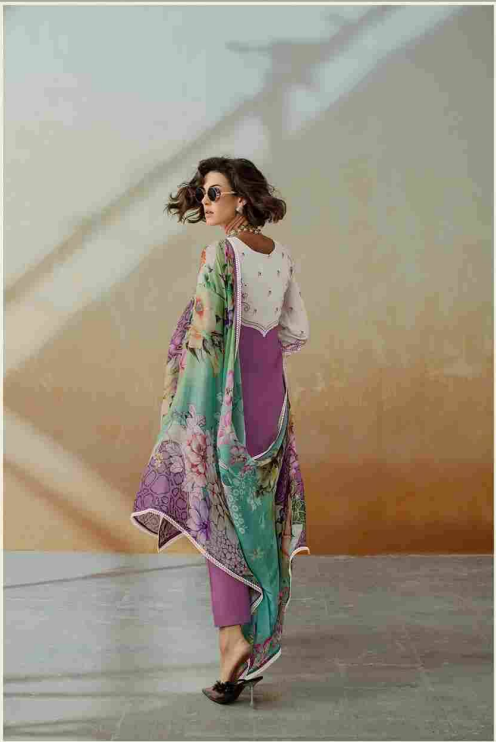
BY KIMORA

CHIC

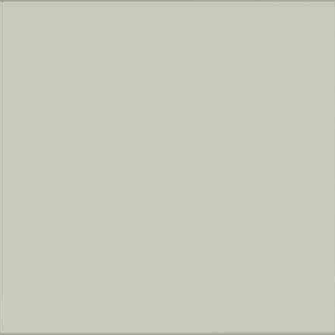


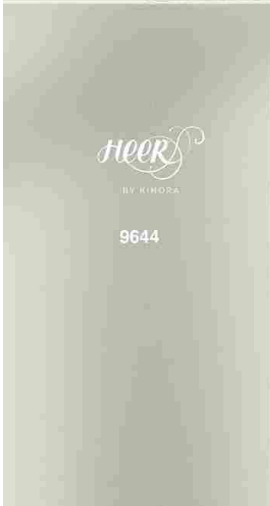


9641











9645





Heer  
BY KINORA

CHIC



9641



9642



9643



9644



9645



9646





BY KIMORA

# CHIC

## TOP

PURE MUSLIN WITH EMBROIDERY FRONT AND SLEEVE, APPLIQUÉ EMBROIDERY YOKE FRONT AND BACK , SCALLOPED RESHAM ORGANZA EMBROIDERY BORDER HEMLINE AND SLEEVES

## DUPATTA

PURE CHINNON WITH DIGITAL PRINT AND FOUR SIDE SCALLOPED BORDER

## BOTTOM

PURE MUSLIN HEAVY

**kimora®**