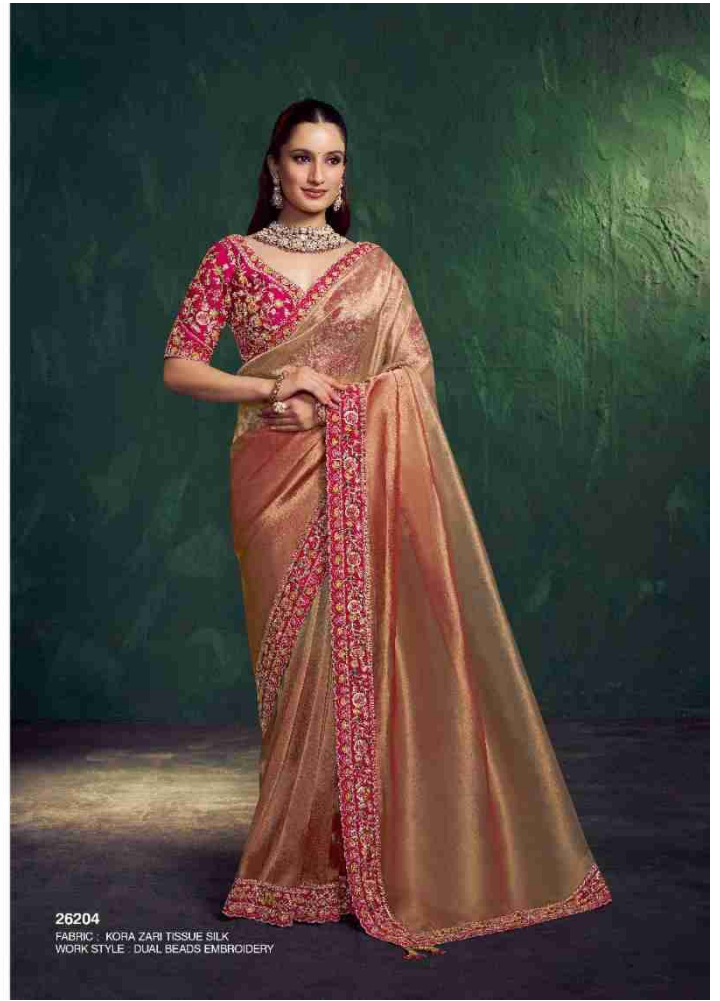
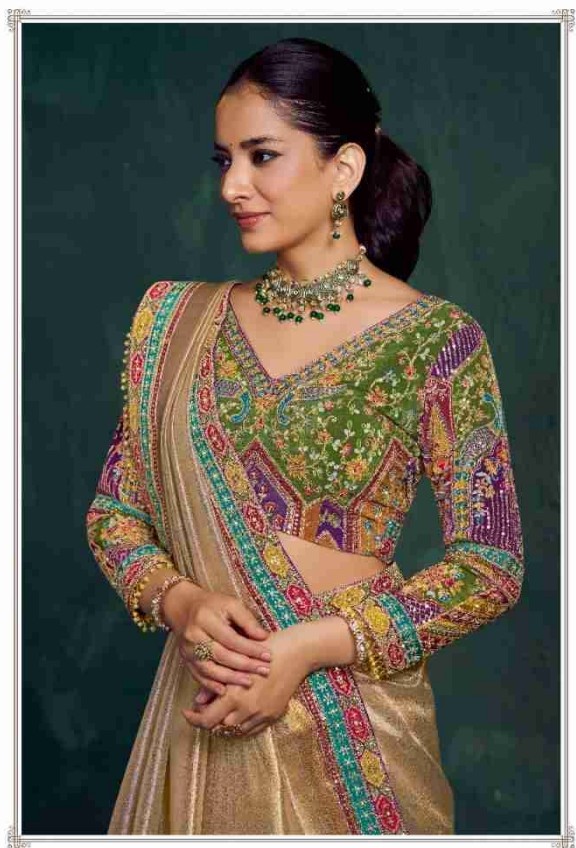


MOHINI



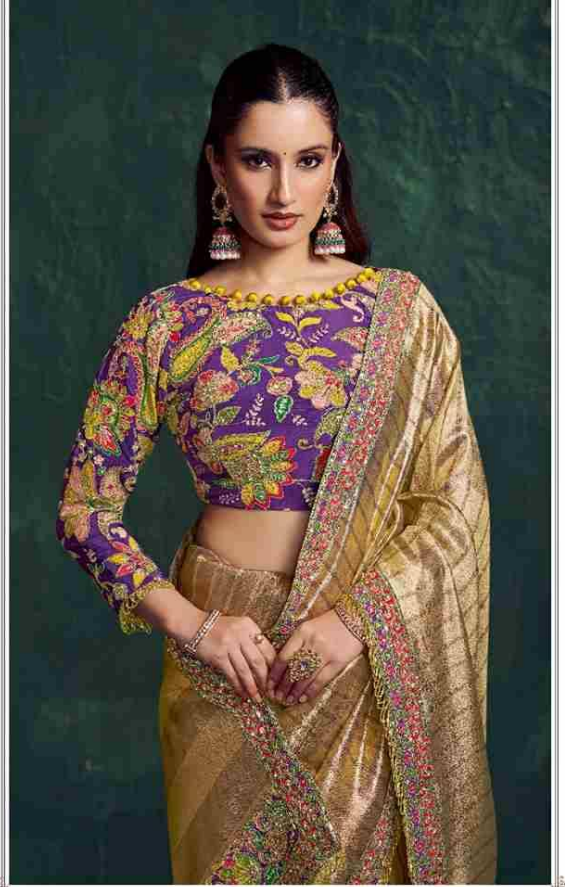


26204
FABRIC : KORA ZARI TISSUE SILK
WORK STYLE : DUAL BEADS EMBROIDERY









© 2018

© 2018

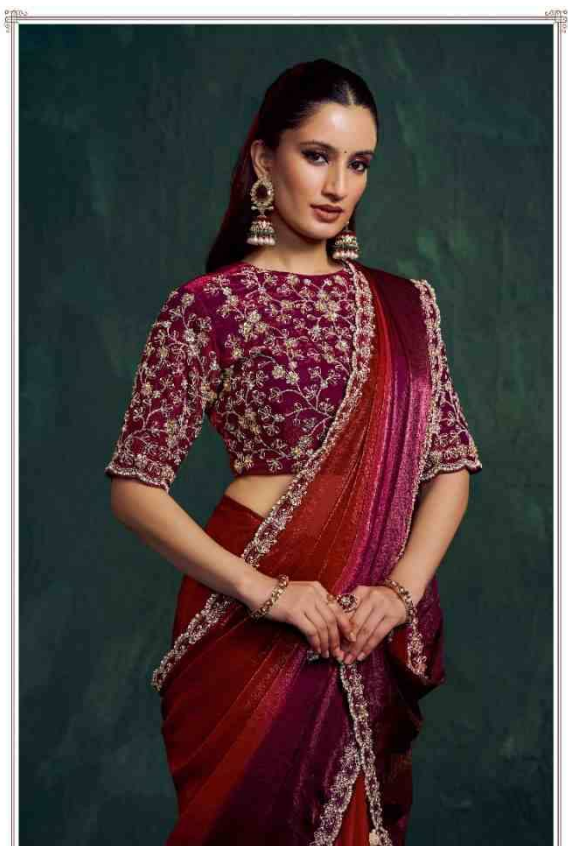


26208

FABRIC : KANJIVARAM ZARI TISSUE
WORK STYLE : FLORAL MOTIFS HIGHLIGHTED
WITH ZARI AND POSITION WORK









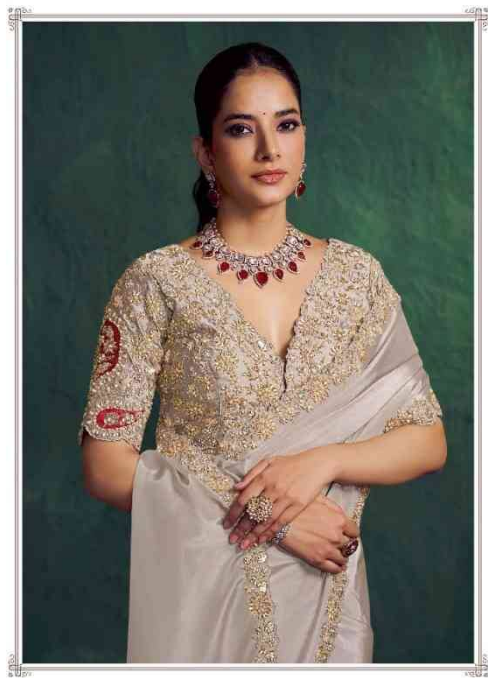


26213

FABRIC: TWO-TONE SHADED SATIN
WORK STYLE: TRIPLE SEQUINS WITH
BEADS EMBELLISHMENT











26218

FABRIC : NATURAL CREPE GEORGETTE SILK

WORK STYLE : EMBROIDERED

ACCESSORIES: REGULAR BLOUSE FABRIC

Additional Stitched Blouse will Incur Extra Charges



26219

FABRIC : TWO TONE SIMMER SATIN SILK

WORK STYLE : EMBROIDERED

ACCESSORIES: REGULAR BLOUSE FABRIC

Additional Stitched Blouse will Incur Extra Charges



26220

FABRIC : PAPER CREPE SILK

WORK STYLE : EMBROIDERED

ACCESSORIES: REGULAR BLOUSE FABRIC

Additional Stitched Blouse will Incur Extra Charges



26221

FABRIC :TWO TONE SATIN SILK

WORK STYLE : EMBROIDERED

ACCESSORIES: REGULAR BLOUSE FABRIC

Additional Stitched Blouse will Incur Extra Charges



26204



26205



26206



26207



26212



26213



26214



26215



26208



26209



26210



26211



26216



26217