



MARIA.B.  
*Chiffons*

**SF-5540-B**

TOP:- HEAVY CHIFFON WITH  
HEAVY EMBROIDERY WORK  
DUPATTA:- CHIFFON EMBROIDERED  
BOTTOM / INNER:- DULL SANTOON

DO NOT USE ANY BLEACH OR RTAN REMOVING CHEMICAL  $\boxtimes$   
IRON THE FABRIC AT MODERATE TEMPERATURE  $\triangle$

DISCLAIMER:  
COLORS MIGHT APPEAR SLIGHTLY DIFFERENT DUE TO  
PHOTOGRAPHIC/LIGHTING EQUIPMENT USED  
SOME ACCESSORIES/EMBELLISHMENTS USED ARE ONLY FOR  
SHOOT PURPOSES AND NOT PART OF THE ACTUAL SUIT



MARIA.B.  
*Chiffons*

**SF-5540**

TOP:- HEAVY CHIFFON WITH  
HEAVY EMBROIDERY WORK  
DUPATTA:- CHIFFON EMBROIDERED  
BOTTOM / INNER:- DULL SANTOON

DO NOT USE ANY BLEACH OR RTAN REMOVING CHEMICAL  $\boxtimes$   
IRON THE FABRIC AT MODERATE TEMPERATURE  $\triangle$

DISCLAIMER:  
COLORS MIGHT APPEAR SLIGHTLY DIFFERENT DUE TO  
PHOTOGRAPHIC/LIGHTING EQUIPMENT USED  
SOME ACCESSORIES/EMBELLISHMENTS USED ARE ONLY FOR  
SHOOT PURPOSES AND NOT PART OF THE ACTUAL SUIT



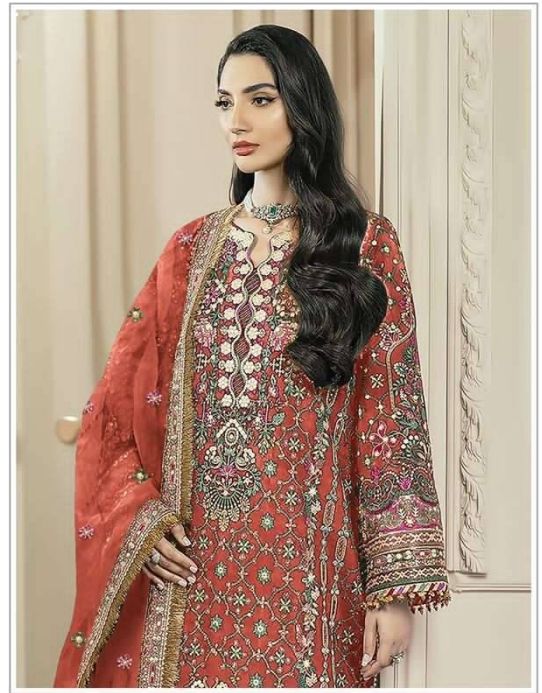
MARIA.B.  
*Chiffons*

**SF-5540-B**

TOP:- HEAVY CHIFFON WITH  
HEAVY EMBROIDERY WORK  
DUPATTA:- CHIFFON EMBROIDERED  
BOTTOM / INNER:- DULL SANTOON

DO NOT USE ANY BLEACH OR RTAN REMOVING CHEMICAL  $\boxtimes$   
IRON THE FABRIC AT MODERATE TEMPERATURE  $\triangle$

DISCLAIMER:  
COLORS MIGHT APPEAR SLIGHTLY DIFFERENT DUE TO  
PHOTOGRAPHIC/LIGHTING EQUIPMENT USED  
SOME ACCESSORIES/EMBELLISHMENTS USED ARE ONLY FOR  
SHOOT PURPOSES AND NOT PART OF THE ACTUAL SUIT



MARIA.B.  
*Chiffons*

**SF-5540-C**

TOP:- HEAVY CHIFFON WITH  
HEAVY EMBROIDERY WORK  
DUPATTA:- CHIFFON EMBROIDERED  
BOTTOM / INNER:- DULL SANTOON

DO NOT USE ANY BLEACH OR RTAN REMOVING CHEMICAL  $\boxtimes$   
IRON THE FABRIC AT MODERATE TEMPERATURE  $\triangle$

DISCLAIMER:  
COLORS MIGHT APPEAR SLIGHTLY DIFFERENT DUE TO  
PHOTOGRAPHIC/LIGHTING EQUIPMENT USED  
SOME ACCESSORIES/EMBELLISHMENTS USED ARE ONLY FOR  
SHOOT PURPOSES AND NOT PART OF THE ACTUAL SUIT



MARIA.B.  
*Chiffons*

**SF-5540-D**

TOP:- HEAVY CHIFFON WITH  
HEAVY EMBROIDERY WORK  
DUPATTA:- CHIFFON EMBROIDERED  
BOTTOM / INNER:- DULL SANTOON

DO NOT USE ANY BLEACH OR RTAN REMOVING CHEMICAL  $\boxtimes$   
IRON THE FABRIC AT MODERATE TEMPERATURE  $\triangle$

DISCLAIMER:  
COLORS MIGHT APPEAR SLIGHTLY DIFFERENT DUE TO  
PHOTOGRAPHIC/LIGHTING EQUIPMENT USED  
SOME ACCESSORIES/EMBELLISHMENTS USED ARE ONLY FOR  
SHOOT PURPOSES AND NOT PART OF THE ACTUAL SUIT

MARIA.B.  
*Chiffons*



**SF-5540**



**SF-5540-B**



**SF-5540-C**



**SF-5540-D**



TOP:- HEAVY CHIFFON WITH  
HEAVY EMBROIDERY WORK  
DUPATTA:- CHIFFON EMBROIDERED  
BOTTOM / INNER:- DULL SANTOON



MADE IN  
*Chiffons*  
SF-5540-B  
TOP: HEAVY COUNTRY KNOT  
HEAVY COUNTRY KNOT  
HEAVY COUNTRY KNOT  
HEAVY COUNTRY KNOT  
HEAVY COUNTRY KNOT



MADE IN  
China  
Chiffon  
SF-5540-C  
100% POLYESTER WITH EMBROIDERY  
WITH BOW, SHIRT COLLAR

