

Ganga<sup>®</sup>  
Charisha  
S4698



Ganga<sup>®</sup>  
Charisha  
S4698



Ganga<sup>®</sup>

S4698-A



Ganga<sup>®</sup>

S4698-B



Ganga<sup>®</sup>  
S4698-A



Ganga<sup>®</sup>

S4698-C

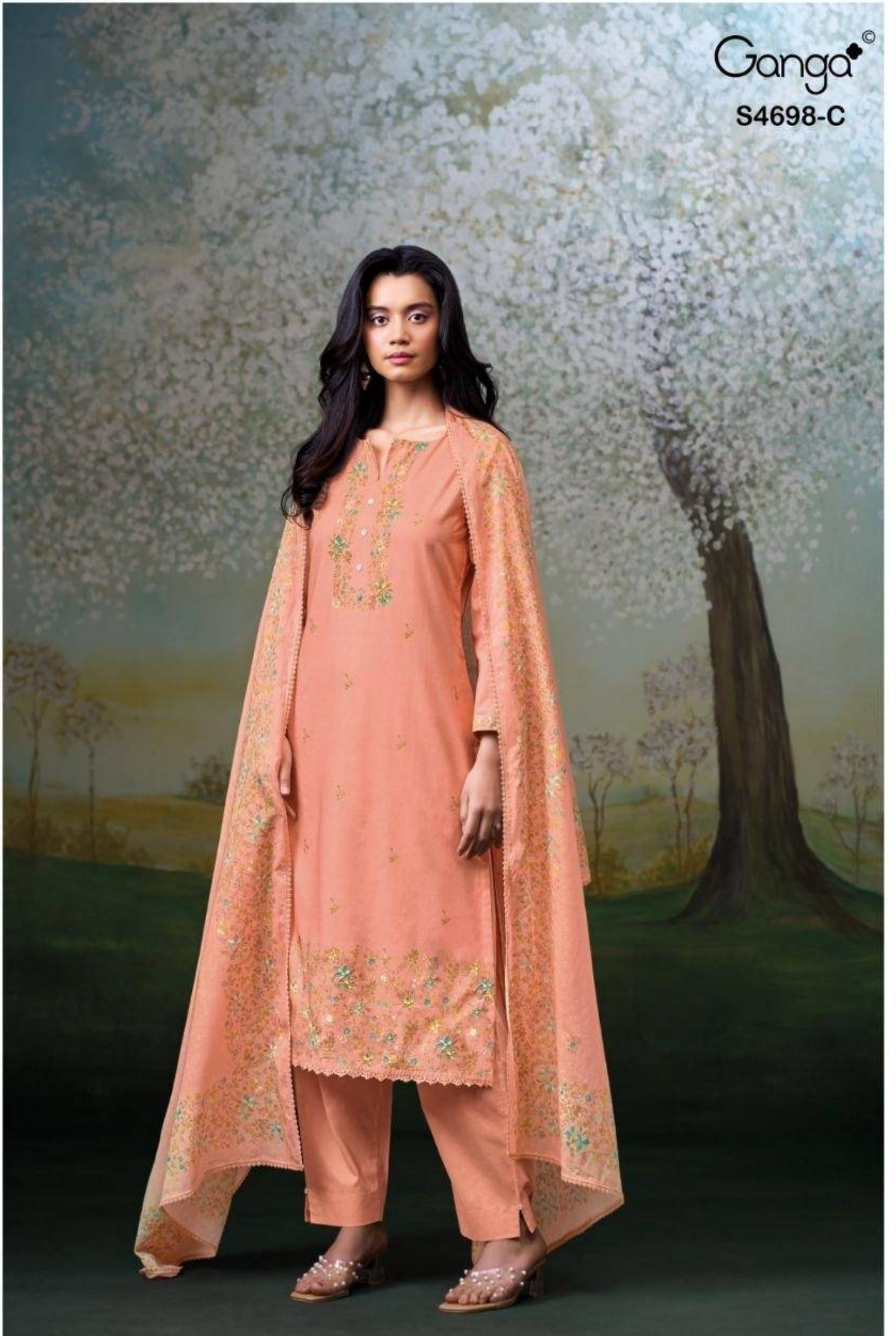


Ganga<sup>®</sup>

S4698-B



Ganga<sup>®</sup>  
S4698-C



Ganga<sup>®</sup>

S4698-D



Ganga<sup>®</sup>

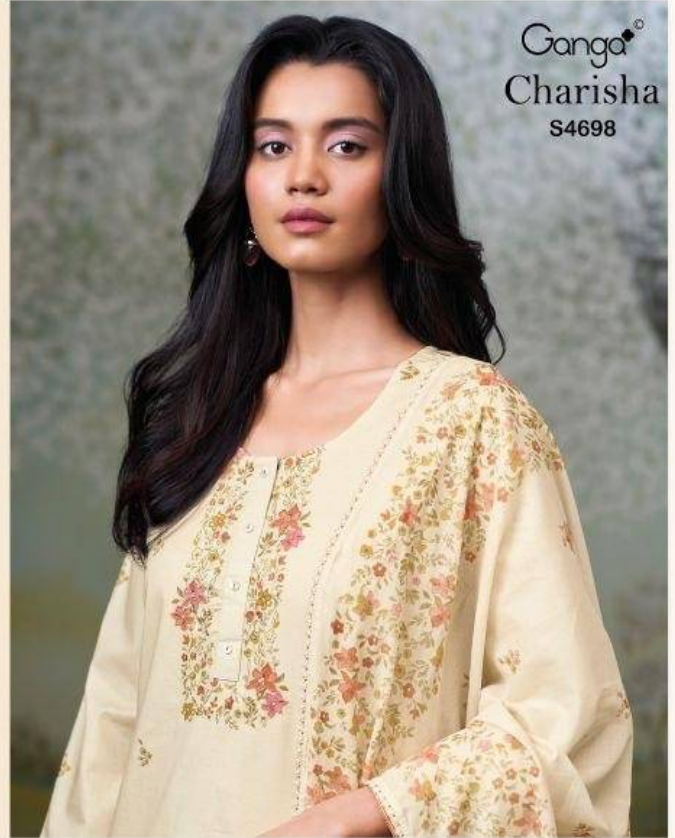
S4698-D



Ganga®

Ganga®  
Charisha  
S4698

Charisha  
S4698



DESCRIPTION

~TOP~

PREMIUM COTTON PRINTED WITH HAND EMBROIDERY,  
HAND WORK, EMBROIDERY LACE ON DAMAN.

~BOTTOM~

PREMIUM COTTON SOLID COLOR

~DUPATTA~

PREMIUM COTTON MUL PRINTED WITH SCHIFFLI  
EMBROIDERY LACE BORDER.

WHOLESALE PRICE  
**1640/- EACH+GST(EXTRA)**

HSN CODE- 520851

MOQ : 64 PCS

TOTAL SUITS-04



S4698-A



S4698-B



S4698-C



S4698-D

Ganga®  
Charisha  
S4698- A/B/C/D