

Ganga<sup>®</sup>  
S4960-C



Ganga<sup>®</sup>

S4960-A

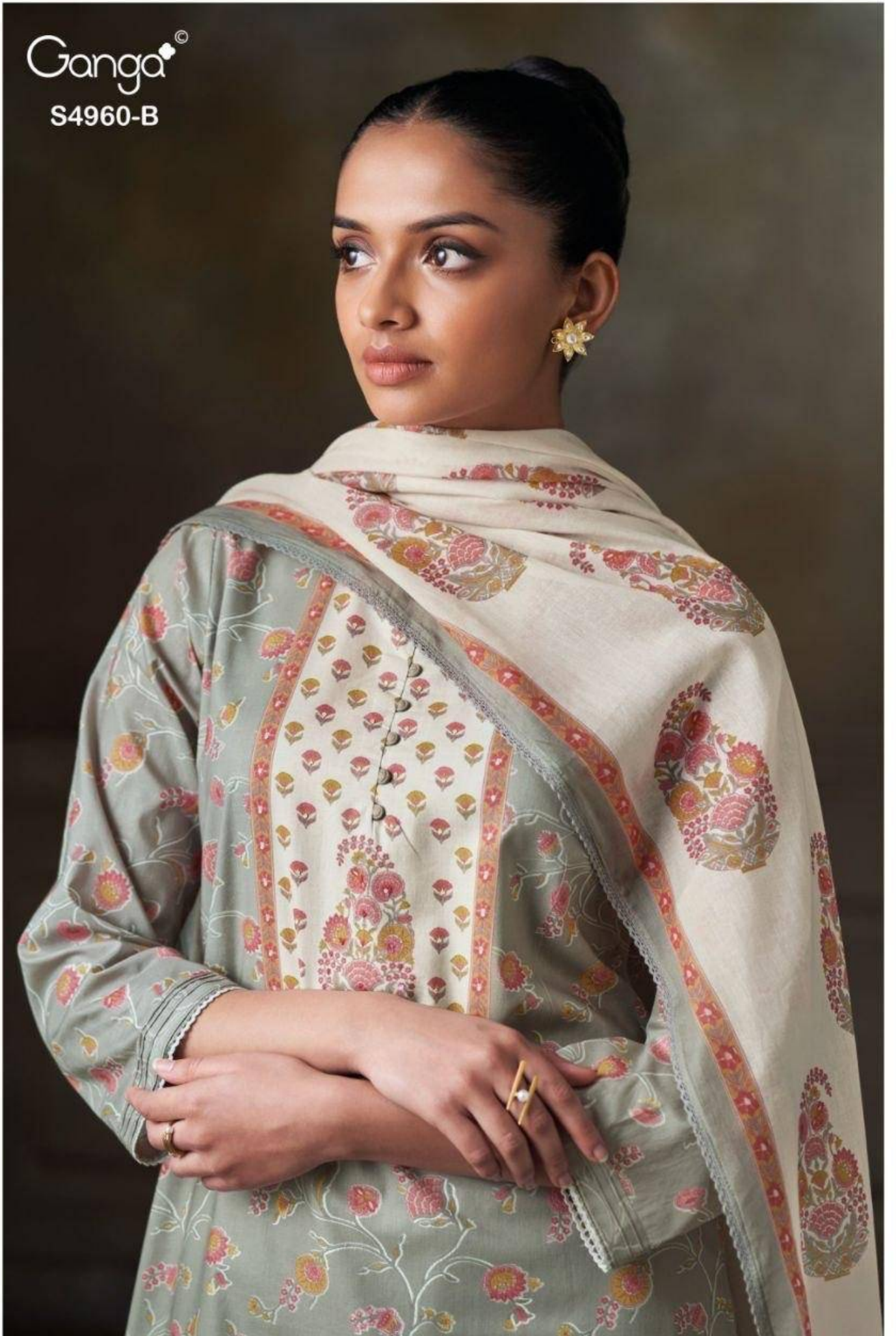


Ganga<sup>®</sup>  
Tersia  
S4960



Ganga<sup>®</sup>

S4960-B



Ganga<sup>©</sup>

S4960-B



Ganga<sup>®</sup>  
S4960-C

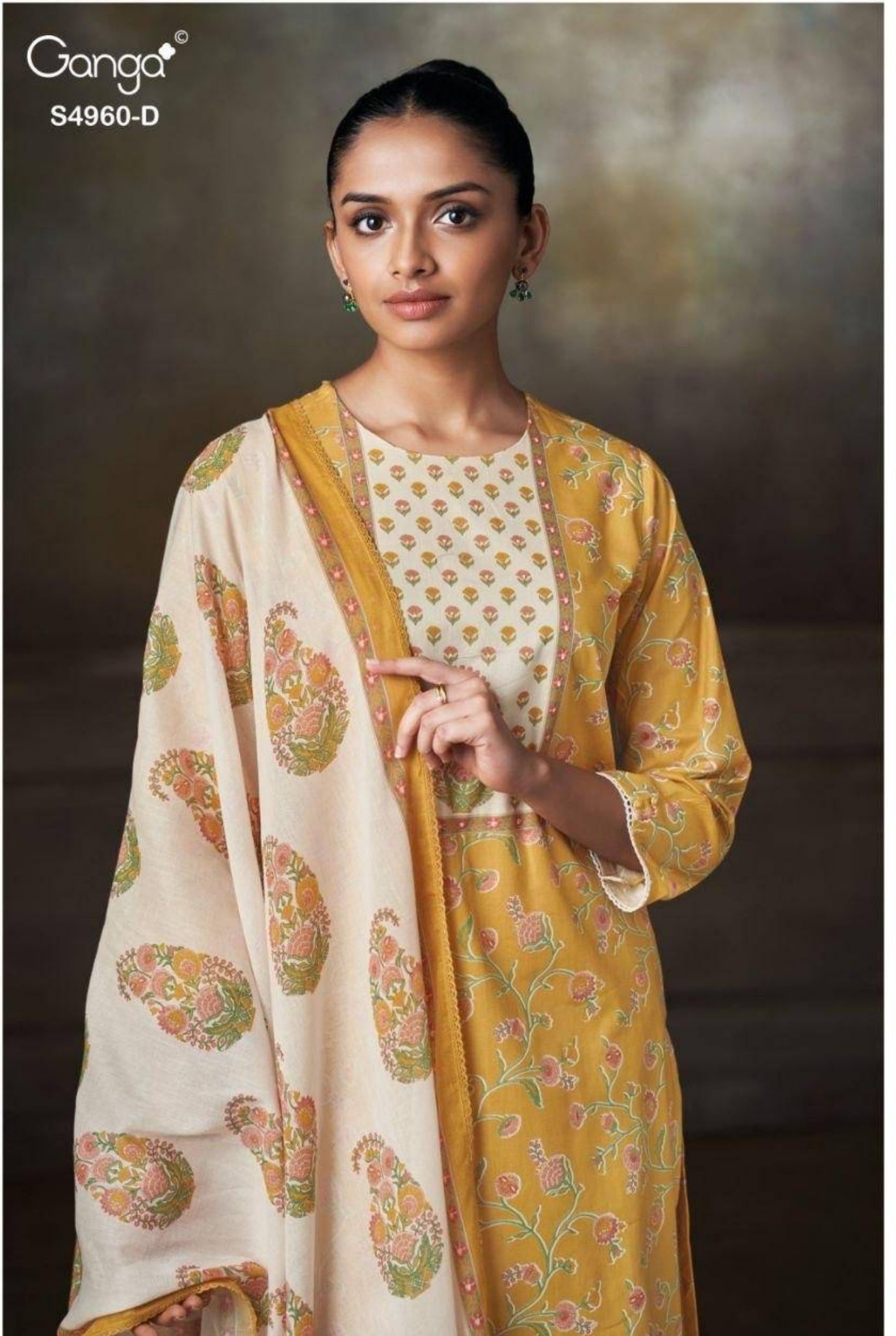


Ganga<sup>©</sup>  
S4960-C



Ganga<sup>®</sup>

S4960-D



Ganga<sup>®</sup>  
S4960-D





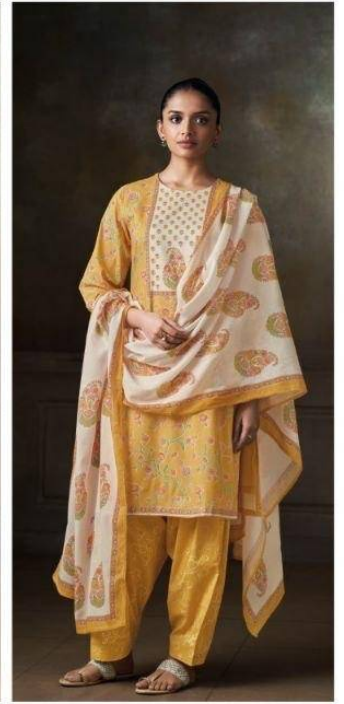
S4960-A



S4960-B



S4960-C



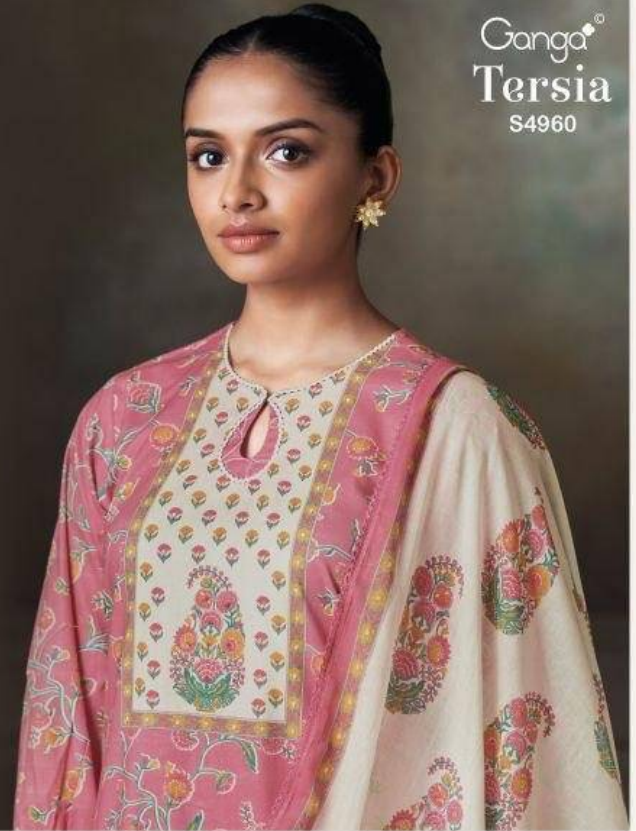
S4960-D

Ganga®  
**Tersia**  
S4960- A/B/C/D

Ganga®

Ganga®  
Tersia  
S4960

Tersia  
S4960



—DESCRIPTION—

~TOP~

PREMIUM COTTON PRINTED WITH HAND WORK,  
CROCHET LACE BORDER ON DAMAN & SLEEVES.

~BOTTOM~

PREMIUM COTTON PRINTED.

~DUPATTA~

PREMIUM COTTON MUL PRINTED WITH CROCHET  
LACE BORDER.

**WHOLESALE PRICE**  
**1590/- EACH+GST(EXTRA)**

HSN CODE- 520851

MOQ : 64 PCS

TOTAL SUITS-04

Ganga<sup>©</sup>  
S4960-A

